



Homeland Security Products Development

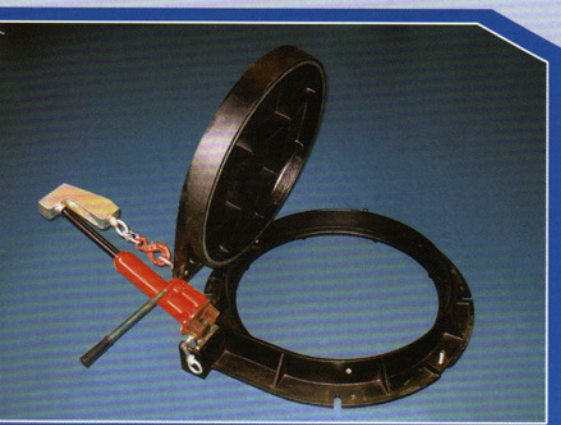
TAKASYU Co., Ltd.

FEATURED PRODUCTS:

CROSSFLOW WINDMILL 

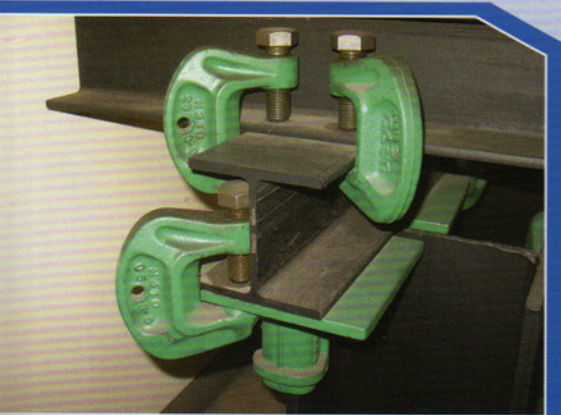
Solar Power Energy

Wireless Surveillance Camera System



HEAVY MANHOLE COVER

Easy Lifting & Lowering System



RIKIMAN - CLAMPING TOOL

Time and Labor Cost Saver



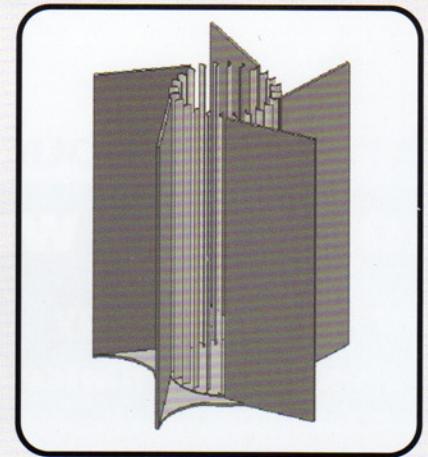
CROSSFLOW TYPE WINDMILL KT-210 WITH WIRELESS CCTV SURVEILLANCE SYSTEM



KT-210 with PTZ camera system



KT-210



Induction board

Our wind-solar hybrid generated system is a self-sufficient energy product that is also environmentally friendly. It can be used as street lights or as an independent remote surveillance system in remote areas without commercial electricity supplies. This cross-flow style windmill can be operated with very little wind and regardless of the direction of the wind unlike propeller-style windmills. This style of hybrid generator supports each other by using the appropriate device to collect its energy. On sunny and cloudy days, the energy is collected from the solar panel. During the night, rainy and snowy days, the windmill replaces the solar panel to generate its energy. This unique approach allows our system to be operated 24 hours throughout the year. Not only is it simple to operate, it also requires no maintenance. The camera has outstanding resolution and zoom capability. A remote receives video signals as far as 4 km and the signals can be monitored and recorded on a PC. The surveillance operator can control the pan/tilt/zoom functions of the camera. Currently we are considering our surveillance camera system to be applied to mobile surveillance technology which can be used by OBP.

Key advantage points of the CROSSFLOW WINDMILL compared with the traditional propeller windmill are as follows:

- **Increases wind induction areas and the wind speed**
- **Inducts wind from any angles with little breeze**
- **Power generation begins with little breeze**
- **Noise is less than 40 db**
- **Maintenance free**

Future application for KT-210
mobile surveillance technology
which can be used by OBP



ROUND SHAPE COVER TM-075 OF A TELECOMMUNICATION CABLE BOX (CC-BOX)



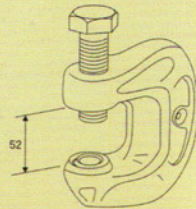
Takasyu's heavy weight manhole cover is one of the most reliable and secure means of protecting underground infrastructure. This 600lbs manhole system is unique in that the cover is designed to be lifted with the use of a specially created and patented jack which allows one authorized personnel to open the cover in approximately 9 minutes. Takasyu's manhole cover lifter was granted an international patent by the International Bureau of WIPO in Switzerland.

RIKIMAN - CLAMPING TOOL

The use of the Rikiman not only saves time in building a scaffolding for construction sites but can also be done at low cost compared to the conventional use of bolts and welding. The Rikiman is an industrial strength clamping tool that reduces time and labor costs. It is created by ADI processing strength for use in major building projects.

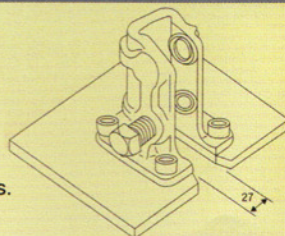
G type:

G type is the tool currently used abundantly by the present method of construction. It is used for fixation of the portion that joins the steel plate of two sheets in piles. Clip width is 62mm and 57mm.



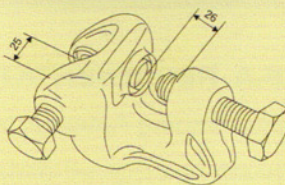
P type:

P type is used for fixation of the portion that joins steel materials level to perpendicular steel materials. Clip width is 27mm.



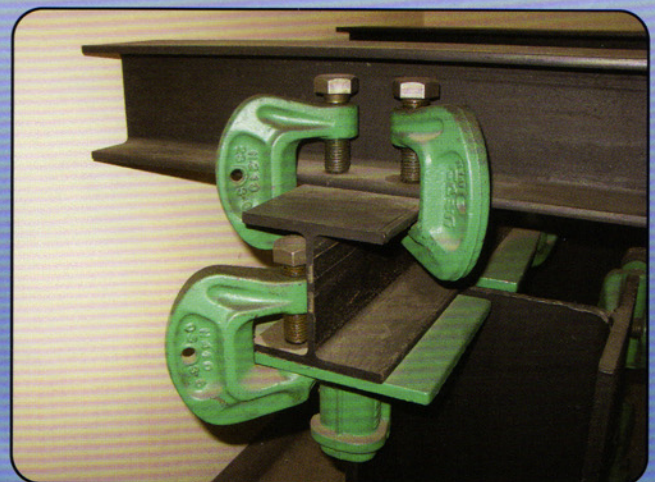
X type:


X type is used for fixation of the portion that joins perpendicular steel materials and slanting steel materials. Grip width is 25mm and 26mm.



Key advantages of using Rikiman to build a scaffolding compared to utilizing conventional bolts and welding are as follows:

- **Assembly time takes 3/5 of the time**
- **The material is stronger, lighter and reusable**
- **It can be used in water and in fire**
- **It is fitted quickly and easily with use of torque wrench**





TAKASYU Co., Ltd.



Takasyu Co., Ltd has been an established manufacturer and wholesaler of machine parts in Japan since 1978. From initial conception of ideas to the final stages of production, Takasyu is involved in all aspects of product development in-house, with particular emphasis on originality and quality control. Thus, Takasyu's development of its **manhole cover** to protect the underground infrastructures and **wind-solar hybrid surveillance camera system** have been granted international patents, and its **construction clamping "Rikiman"** device has been awarded with a Japanese patent.

Our manhole cover is currently utilized by NTT (Nippon Telegraph and Telephone Public Corporation), the largest telephone company in Japan, to help protect the underground infrastructure in all regions of Japan.

At Takasyu, we take pride in participating in the progress of our community through our technological innovations that take into account environmentally conscious measures to achieve such growth.

MAIN OFFICE:

2-1-1 Mizusawa Kogyodanchi, Mizusawa-Ku,
Osyu-City, Iwate 0123-0002 Japan

Tel: 81-197-25-6811

Fax: 81-107-25-6813

U.S.A. REPRESENTATIVE:

Heisei Trading America, Inc. Los Angeles, CA

E-mail: heisei@cathand.com